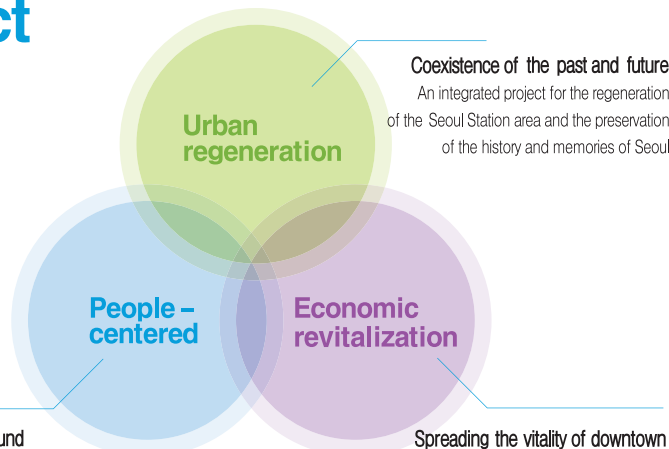




## The Seoullo 7017 Project

The Seoullo 7017 project promotes the regeneration of the Seoul Station area by remodeling the old Seoul Station overpass constructed in 1970 into 17 pedestrian walkways.



### A nice city to walk around

Transition from a traffic-centered city to a people-centered city, to provide a space for rest and meditation in the downtown area

### Spreading the vitality of downtown

Spreading the vitality of downtown to the western part of Seoul by connecting the east and west part of the Seoul Station area, which used to be separated by railroad tracks.

## Tourist Sites around Seoullo 7017 Top 8

Korea's first modern brick building

**Yakhyun Catholic Church**



The church is Korea's first modern brick Catholic church completed in September 1892 built in the style of late 20th century church architecture. It commands the view of Seosomun Neighborhood Park where many Catholic believers were martyred during the Joseon Dynasty's persecution of Catholics.

The theater dedicated to the National Drama Company of Korea

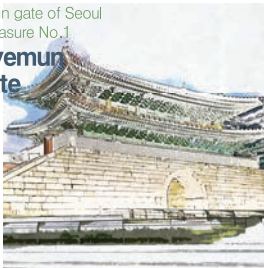
**Open Cultural Space**



The space consists of the theater dedicated to Korea's only national drama company established in 1950 and its practice studio. It was originally the site of the Defense Security Command and renovated into the current red-colored cultural space in 2010.

Rebirth of the main gate of Seoul National Treasure No. 1

**Sungnyemun Gate**



Completed in 1398, it is one of the four main gates that defend the borders of Seoul. After a fire in February 2008, it underwent five years of restoration work and regained its original look.

Korea's first apartment built in 1937

**Chungjeong Apartment**



Due to expansion of roads in 1979, the apartment was half-demolished and only the present building remains. This apartment, featuring a unique inner courtyard and green exterior walls, was once occupied by North Korean troops during the Korean War and later used as a hotel for UN leaders and staff.

Korea's first modern brick building

**Son Kee Chung Memorial Hall**



It was established in memory of Son Kee Chung, the Marathon gold medalist of the 1936 Berlin Olympics. The building, originally Yangjeong High School, Son's alma mater, was remodeled and opened as the memorial hall in 2012 with the laurel tree awarded to the Olympic gold medalist planted in the front yard.

The old Seoul Station reborn as a complex cultural space

**Culture Station Seoul 284**



Constructed in 1925, it ended its life as a railway station in 2004 with the completion of the new station following the introduction of KTX. Reborn through restoration work, it has been used as a complex cultural space since 2011.

Revival of the fashion mecca of the 70s and 80s

**Yeomcheongyo Handmade Shoes Street**



The shoe street was formed with the completion of the old Seoul Station in 1925. During the 1970s and 1980s, the street was the mecca of the shoe manufacturing industry of Korea. Amidst the emergence of new fashion districts, it is now preparing itself for a new leap forward focusing on its value as a historic site.

The world's oldest and largest city wall Hanyangdoseong, the Seoul City Wall

**Hanyangdoseong**



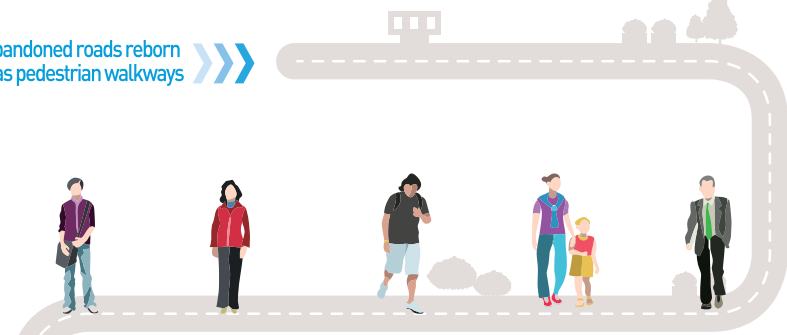
Constructed in 1396 by King Taejo of the Joseon Dynasty, it was the wall that surrounded and defended the kingdom's capital Hanyang (current Seoul). It is the oldest and largest existing city wall in the world. Its original length amounted to 18.6km, and 70% of the structure remains intact or has been restored. In 2012, the 239 meters of rampart and site near Baekbeom Square was restored.

Seoullo  
SINCE 7017

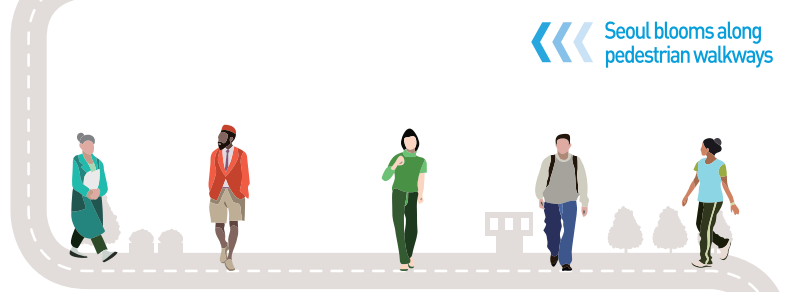
The beginning of people - centered urban regeneration

# SEOULLO 7017

An abandoned roads reborn as pedestrian walkways



Seoul blooms along pedestrian walkways



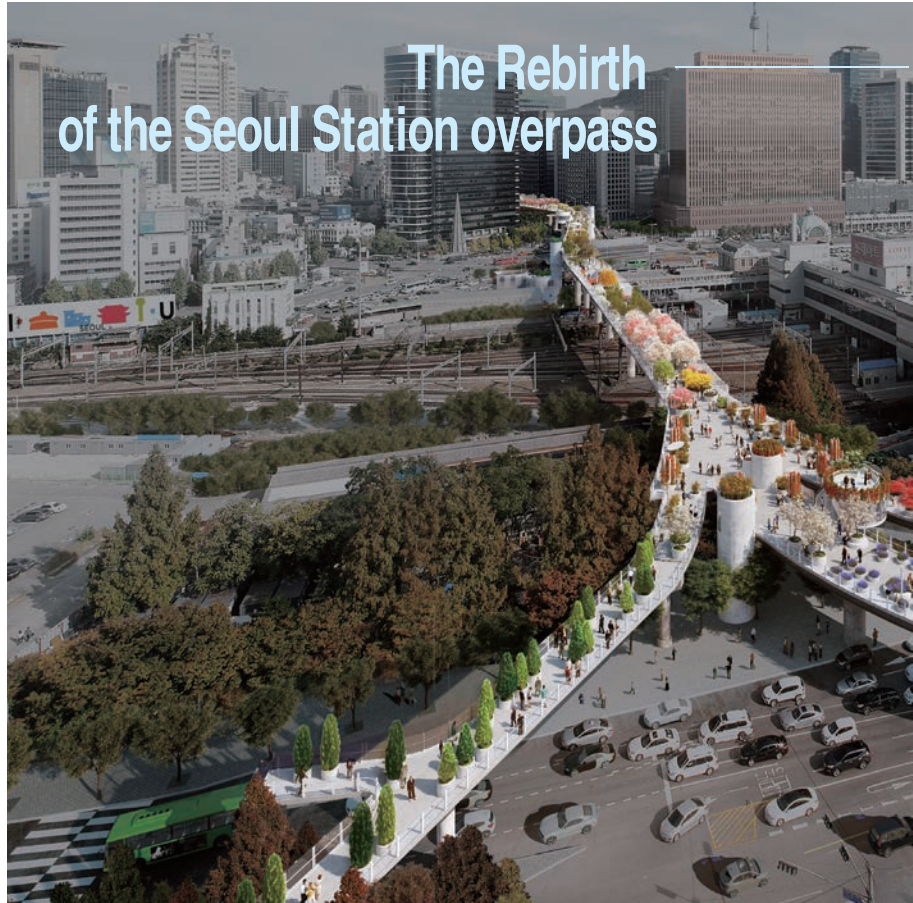
People gather  
The economy is revived



SEOUL METROPOLITAN  
GOVERNMENT

Website: [seoullo7017.seoul.go.kr](http://seoullo7017.seoul.go.kr)

## The Rebirth of the Seoul Station overpass



## Seoullo 7017

Not demolition — But regeneration  
From a road — to pedestrian walkways  
From downtown Seoul — To breathing walkways  
Again — Rebirth

The Seoul Station Highway Completed in 1970 and reborn in 2017

Reborn from highways to 17 pedestrian walkways

A 17m-high overpass constructed in 1970

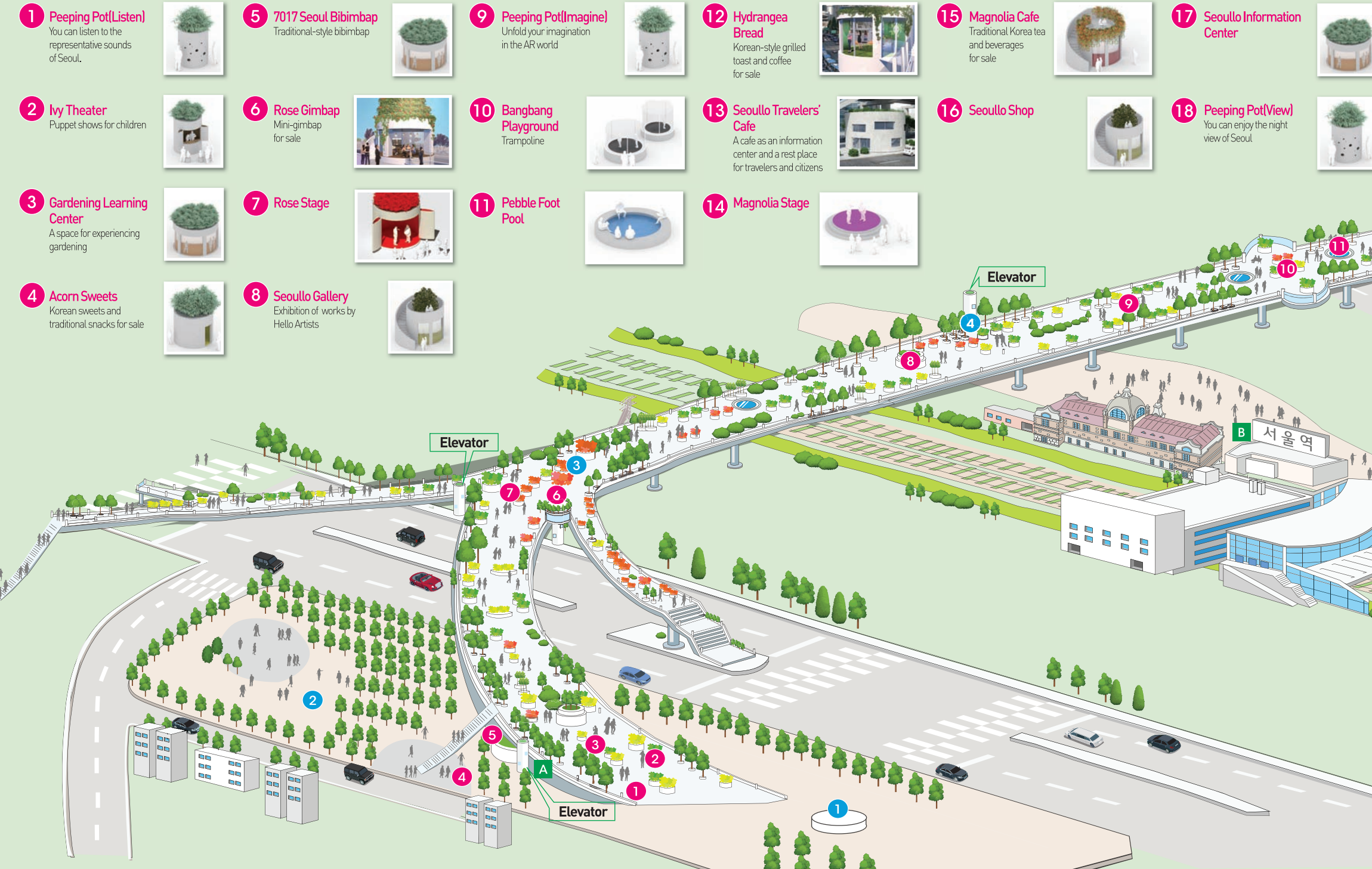


# Let's learn more about Seoulo



The Seoul Station overpass constructed in 1970 is reborn as 17 pedestrian walkways equipped with 645 round flower pots, 18, amenities, and rest places for citizens.

## Seoulo 7017 Facility Guide



## Seoulo 7017 Place Guide

- Yunseul**  
An old garbage truck garage transformed into a rest space for citizens
- Malli-dong Square**  
An old garbage truck garage transformed into a rest space for citizens
- Rose Pavilion**  
A space for citizen's leisure and various events
- Seoul Station Plaza**  
Connected to Seoulo by an escalator installed next to Seoul Station Police Station
- Toegye-ro**  
Connected to Seoulo by an escalator and elevator installed in a traffic island on Toegye-ro
- Magnolia Pavilion**  
A space for citizen's leisure and various events
- Neighboring building**  
Directly connected to Seoulo (Hotel Manu, Daewoo Foundation Overpass)
- Hanyangdoseong Connect**  
The Seoul City Wall and Namsan Mountain Connected to Seoulo by an elevator leading to Namsan Pedestrian Overpass
- Hoehyeon Station**  
Connected to Seoulo by an elevator

### Audio guide

How to use the Seoulo 7017 audio guide app

- Download the 'Infodio' app or 'Smart Tour Guide' app from the App Store or Google Play on Your smart device.
- Infodio : Find Seoulo on the map and audio guides corresponding to your location will automatically play.  
Smart Tour Guide : Find Seoulo in the Seoul category and select the guides you want.
- Enjoy your walk on Seoulo listening to the stories about the 50 species of trees and plants arranged in Korea alphabetical order based on the names of the botanical families that they belong to.  
\* Please use your own smart devices and earphones.  
[No rental service available.]

### Restrooms open for travelers | Toilet

- |                             |                                    |
|-----------------------------|------------------------------------|
| A Seoulo Maintenance Office | D Daewoo Foundation Building       |
| B Seoul Station             | E Hotel Manu                       |
| C Seoulo Travelers' Cafe    | F Hoehyeon Station (Subway Line 4) |